
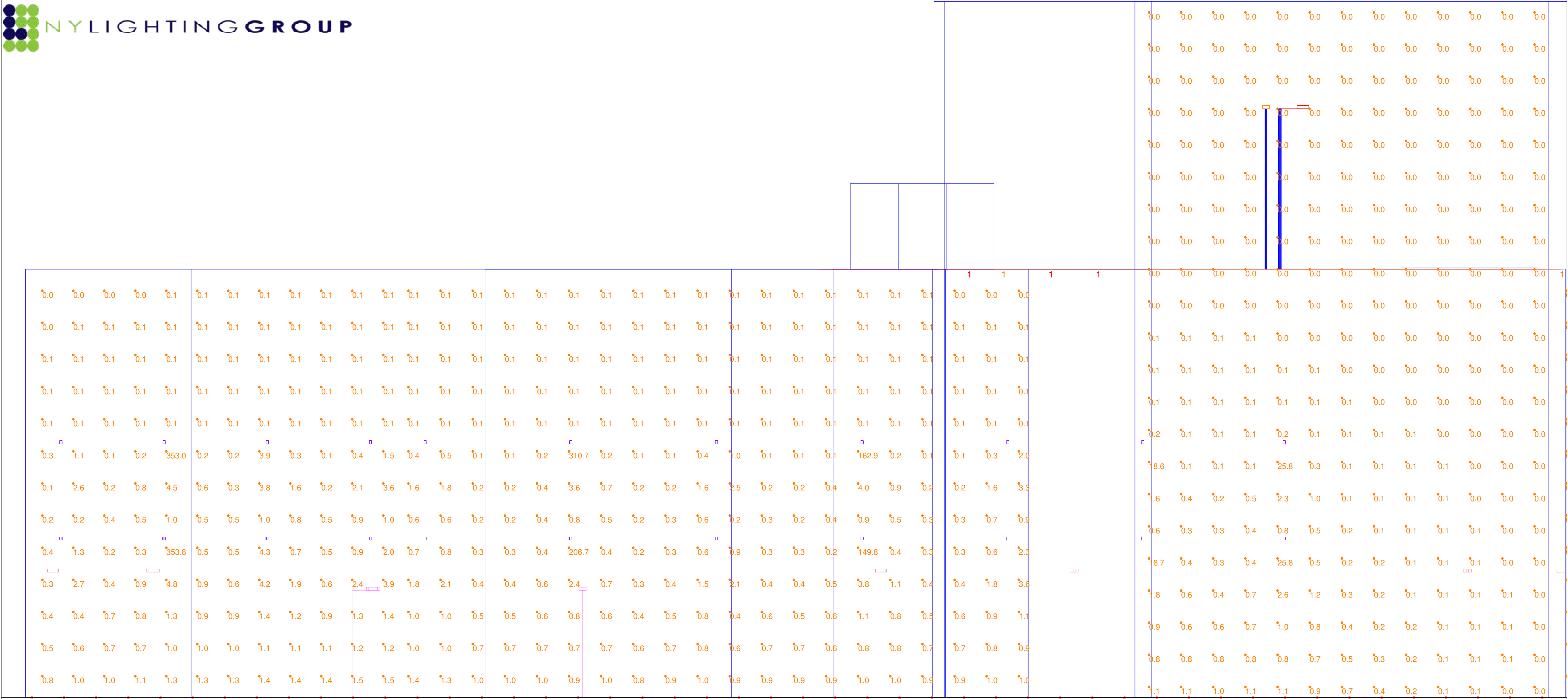




14750 E Nelson Ave E unit b, City of Industry, CA 91744, United States		444 Bedford Rd.Plesantville		Date:2025-04-17
		Prepared for: Mark Sheppard		AGi32® Version 20.11.12
		Filename: 444 Bedford Rd.Plesantville -V02.AGI		Page 1 of 12
		By: Damian Iwanczuk		
DISCLAIMER: Calculations have been performed according to IESNA & CIE standards and goodpractice. Some differences between measured values and calculated results may occur due to tolerances in calculation methods, testing procedures, component performance, measurement techniques and field conditions such as voltage and temperature variations. Input data used to generate the attached calculations such as room dimensions, reflectances, furniture and architectural elements significantly affect the lighting calculations. If the real environment conditions do not match the input data, differences will occur between measured values and calculated values.				



ELEVATION - BEDFORT

14750 E Nelson Ave E unit b, City of Industry, CA 91744, United States



444 Bedford Rd.Plesantville

Prepared for: Mark Sheppard

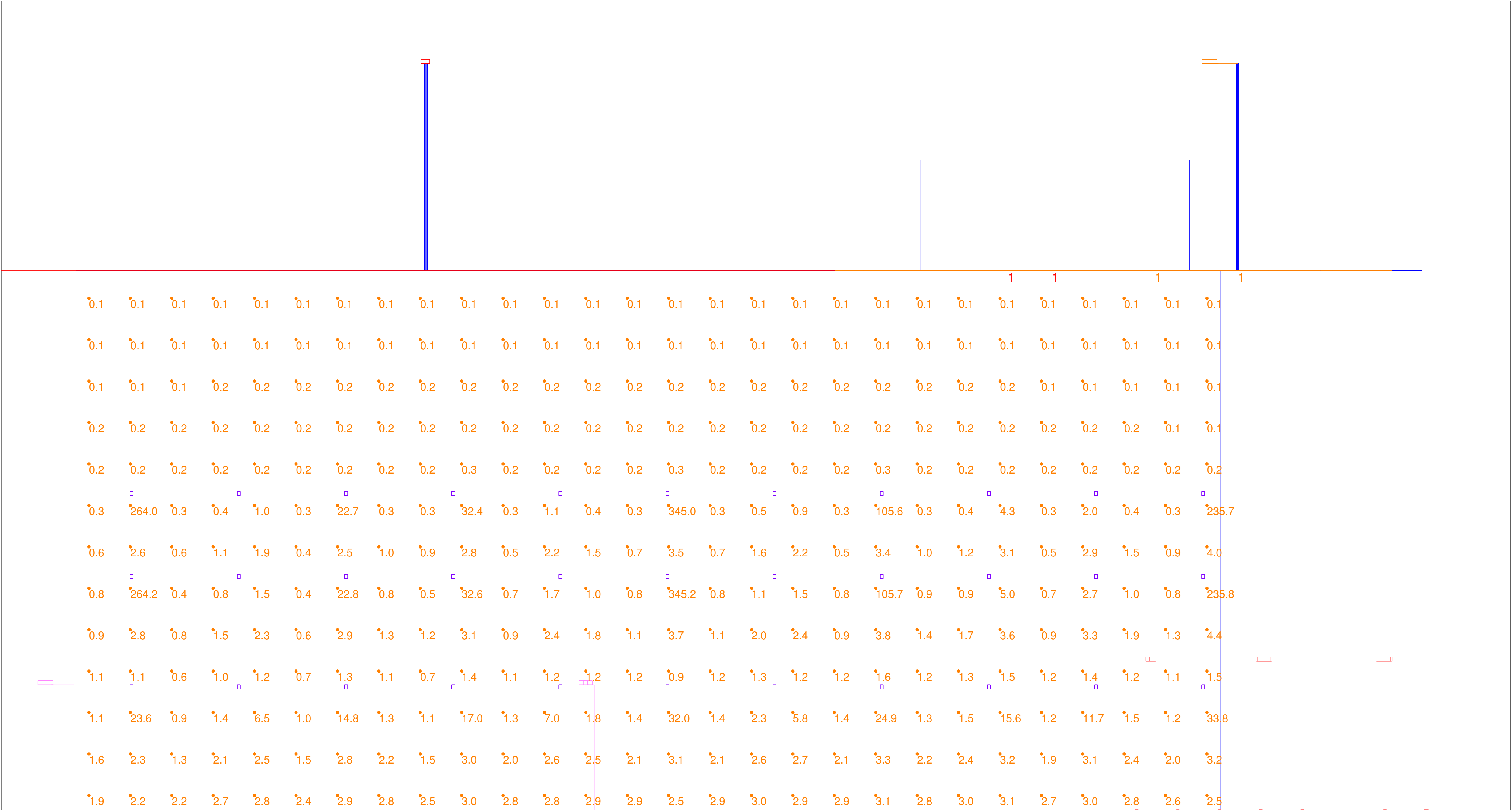
Filename: 444 Bedford Rd.Plesantville -V02.AGI

By: Damian Iwanczuk

Date:2025-04-17

AGi32® Version 20.11.12

DISCLAIMER: Calculations have been performed according to IESNA & CIE standards and goodpractice. Some differences between measured values and calculated results may occur due to tolerances in calculation methods, testing procedures, component performance, measurement techniques and field conditions such as voltage and temperature variations. Input data used to generate the attached calculations such as room dimensions, reflectances, furniture and architectural elements significantly affect the lighting calculations. If the real environment conditions do not match the input data, differences will occur between measured values and calculated values.



ELEVATION - WHEELER AVE

14750 E Nelson Ave E unit b, City of Industry, CA 91744, United States



444 Bedford Rd.Plesantville

Prepared for: Mark Sheppard

Filename: 444 Bedford Rd.Plesantville -V02.AGI






By: Damian Iwanczuk

Date:2025-04-17


AGi32® Version 20.11.12

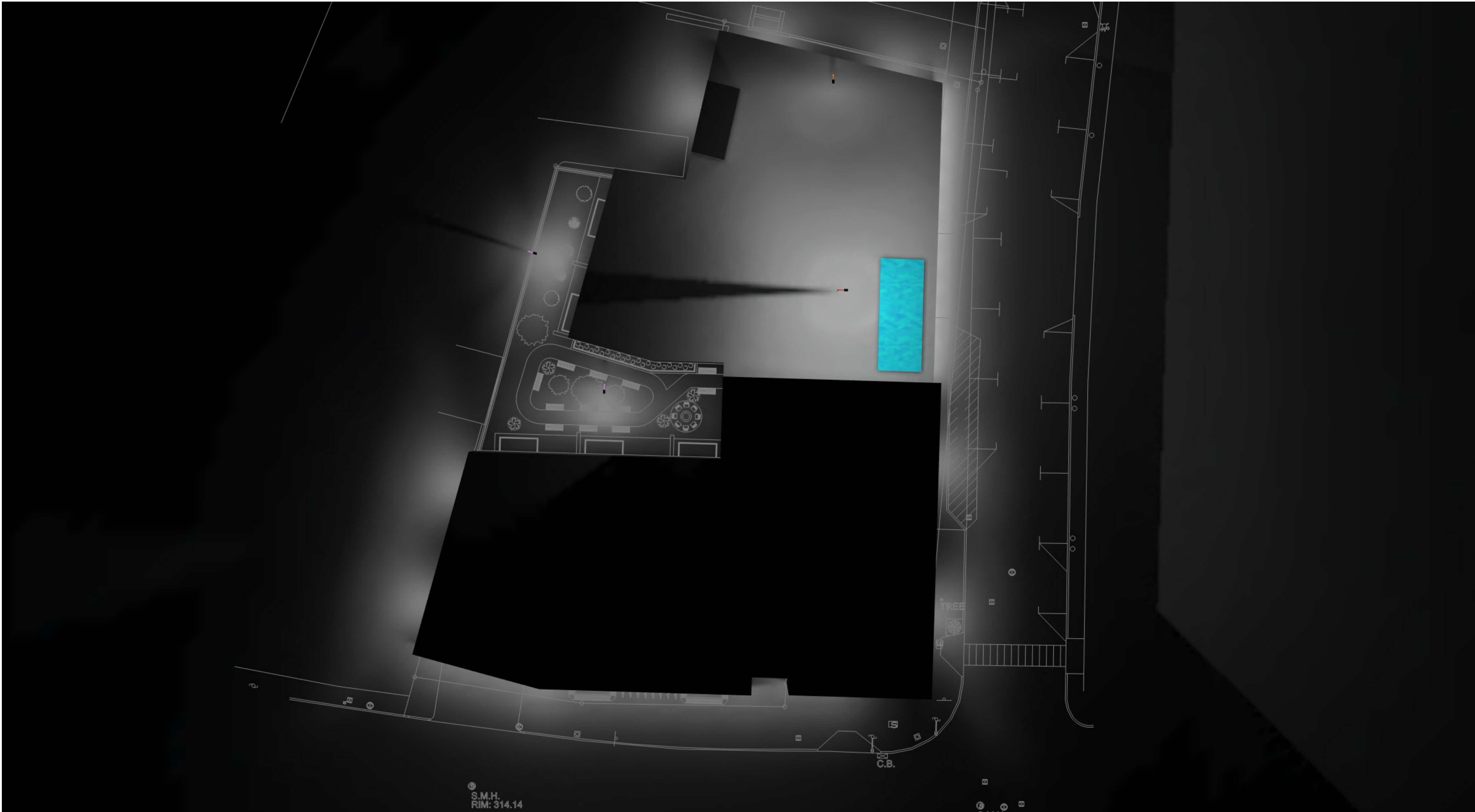
DISCLAIMER: Calculations have been performed according to IESNA & CIE standards and goodpractice. Some differences between measured values and calculated results may occur due to tolerances in calculation methods, testing procedures, component performance, measurement techniques and field conditions such as voltage and temperature variations. Input data used to generate the attached calculations such as room dimensions, reflectances, furniture and architectural elements significantly affect the lighting calculations. If the real environment conditions do not match the input data, differences will occur between measured values and calculated values.




Luminaire Schedule										
Symbol	Qty	Label	Arrangement	Description	LLF	Luminaire Lumens	Luminaire Watts	Total Watts	Mounting Height	BUG Rating
	7	WPA-28W	Single	WPA-G2-70 3000K (Position 4 - 28W)	0.900	4806	25.6	179.2	12	B2-U0-G1
	55	WS-S	Single	Wall Mount Cylinder Selectable - DIRECT	0.900	1042	9.5	522.5	10, 15, 18, 24	B1-U1-G0
	1	ALV-IV	Single	ALV-4030T4-XXUNVD C/W 15' POLE	0.900	6766	40.17	40.17	55	B1-U0-G2
	2	ALV-II	Single	ALV-4030T2-XXUNVD C/W 10' POLE	0.900	6880	40.3	80.6	10	B1-U0-G1
	1	ALV-V	Single	ALV-30030T5-XXUNVD C/W 15' POLE	0.900	45338	301.81	301.81	55	B5-U0-G4

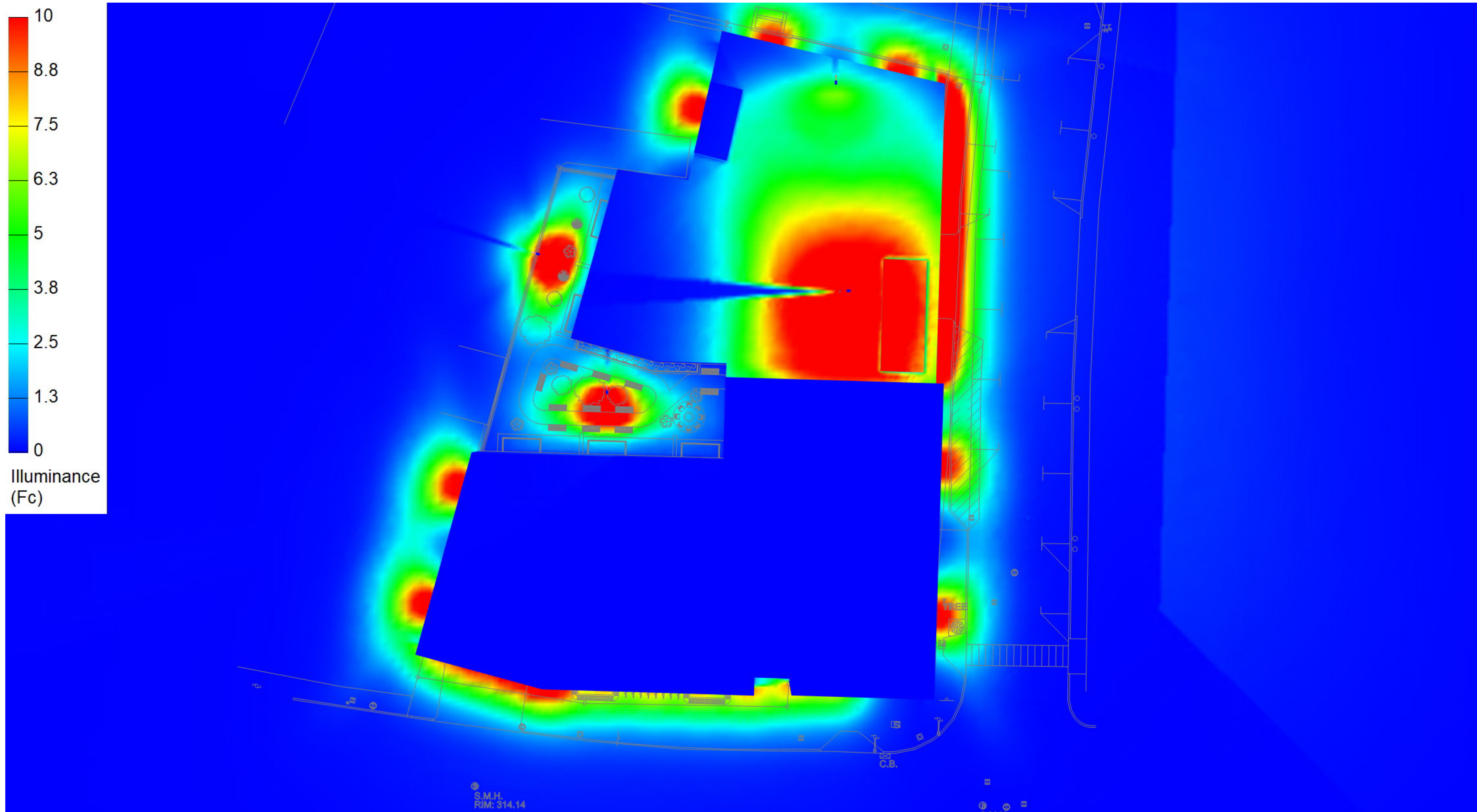
Label	CalcType	Units	Avg	Max	Min	Avg/Min	Max/Min
COURTYARD	Illuminance	Fc	3.71	15.0	0.4	9.28	37.50
GARAGE ENTRANCE	Illuminance	Fc	5.34	10.8	0.9	5.93	12.00
PAVED PERIMETER	Illuminance	Fc	6.13	25.8	0.1	61.30	258.00
POOL DECK	Illuminance	Fc	11.40	14.6	6.8	1.68	2.15
POOL_Planar	Illuminance	Fc	10.69	12.9	8.5	1.26	1.52
ROOFTOP_Top	Illuminance	Fc	5.43	12.0	0.1	54.30	120.00
SPILL	Illuminance	Fc	0.63	17.0	0.0	N.A.	N.A.
WALL (WHEELER AVE)_Side_4	Illuminance	Fc	7.05	345.2	0.1	70.50	3452
WALL SEGMENT 1 (BEDFORT)_Side_8	Illuminance	Fc	5.27	353.8	0.0	N.A.	N.A.
WALL SEGMENT 2 (BEDFORT)_Side_7	Illuminance	Fc	3.70	310.7	0.0	N.A.	N.A.
WALL SEGMENT 3 (BEDFORT)_Side_5	Illuminance	Fc	0.46	25.8	0.0	N.A.	N.A.
SECURITY PERIMETER	Illuminance	Fc	4.82	353.8	0.0	N.A.	N.A.

14750 E Nelson Ave E unit b, City of Industry, CA 91744, United States		444 Bedford Rd.Plesantville		Date:2025-04-17
		Prepared for: Mark Sheppard		AGi32® Version 20.11.12
		Filename: 444 Bedford Rd.Plesantville -V02.AGI		Page 4 of 12
By: Damian Iwanczuk				
DISCLAIMER: Calculations have been performed according to IESNA & CIE standards and goodpractice. Some differences between measured values and calculated results may occur due to tolerances in calculation methods, testing procedures, component performance, measurement techniques and field conditions such as voltage and temperature variations. Input data used to generate the attached calculations such as room dimensions, reflectances, furniture and architectural elements significantly affect the lighting calculations. If the real environment conditions do not match the input data, differences will occur between measured values and calculated values.				



14750 E Nelson Ave E unit b, City of Industry, CA 91744, United States		444 Bedford Rd.Plesantville		Date:2025-04-17
		Prepared for: Mark Sheppard		AGi32® Version 20.11.12
		Filename: 444 Bedford Rd.Plesantville -V02.AGI		Page 5 of 12
		By: Damian Iwanczuk		

DISCLAIMER: Calculations have been performed according to IESNA & CIE standards and goodpractice. Some differences between measured values and calculated results may occur due to tolerances in calculation methods, testing procedures, component performance, measurement techniques and field conditions such as voltage and temperature variations. Input data used to generate the attached calculations such as room dimensions, reflectances, furniture and architectural elements significantly affect the lighting calculations. If the real environment conditions do not match the input data, differences will occur between measured values and calculated values.

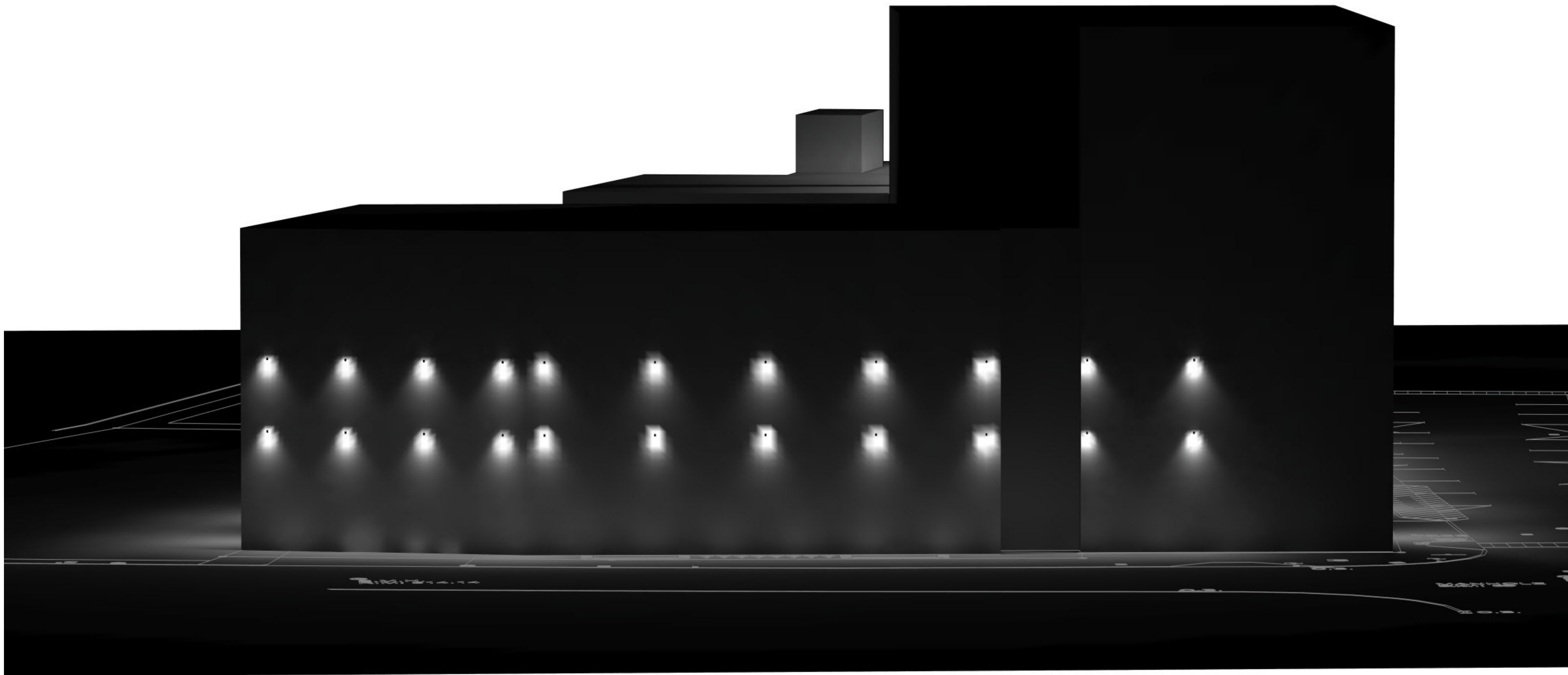


ALS

By: Damian Iwanczuk

Page 6 of 12

DISCLAIMER: Calculations have been performed according to IESNA & CIE standards and goodpractice. Some differences between measured values and calculated results may occur due to tolerances in calculation methods, testing procedures, component performance, measurement techniques and field conditions such as voltage and temperature variations. Input data used to generate the attached calculations such as room dimensions, reflectances, furniture and architectural elements significantly affect the lighting calculations. If the real environment conditions do not match the input data, differences will occur between measured values and calculated values.



14750 E Nelson Ave E unit b, City of Industry, CA 91744, United States



444 Bedford Rd.Plesantville

Prepared for: Mark Sheppard

Filename: 444 Bedford Rd.Plesantville -V02.AGI

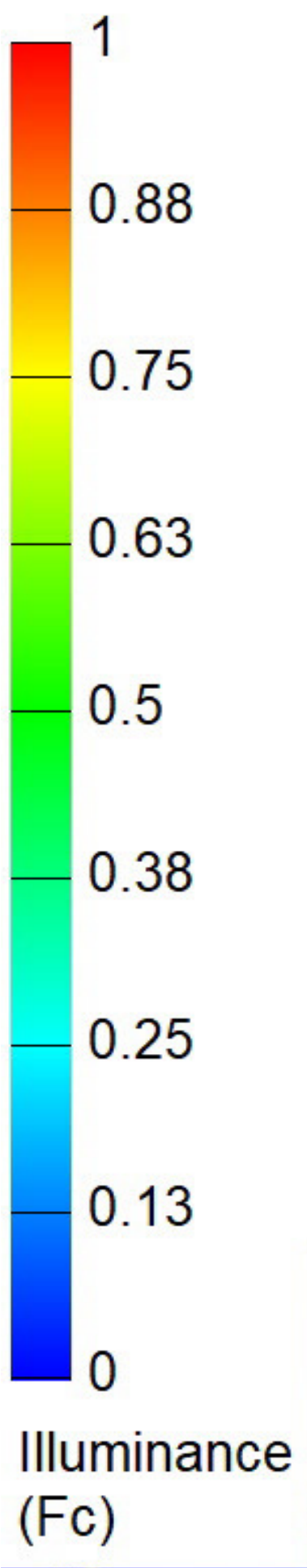
By: Damian Iwanczuk

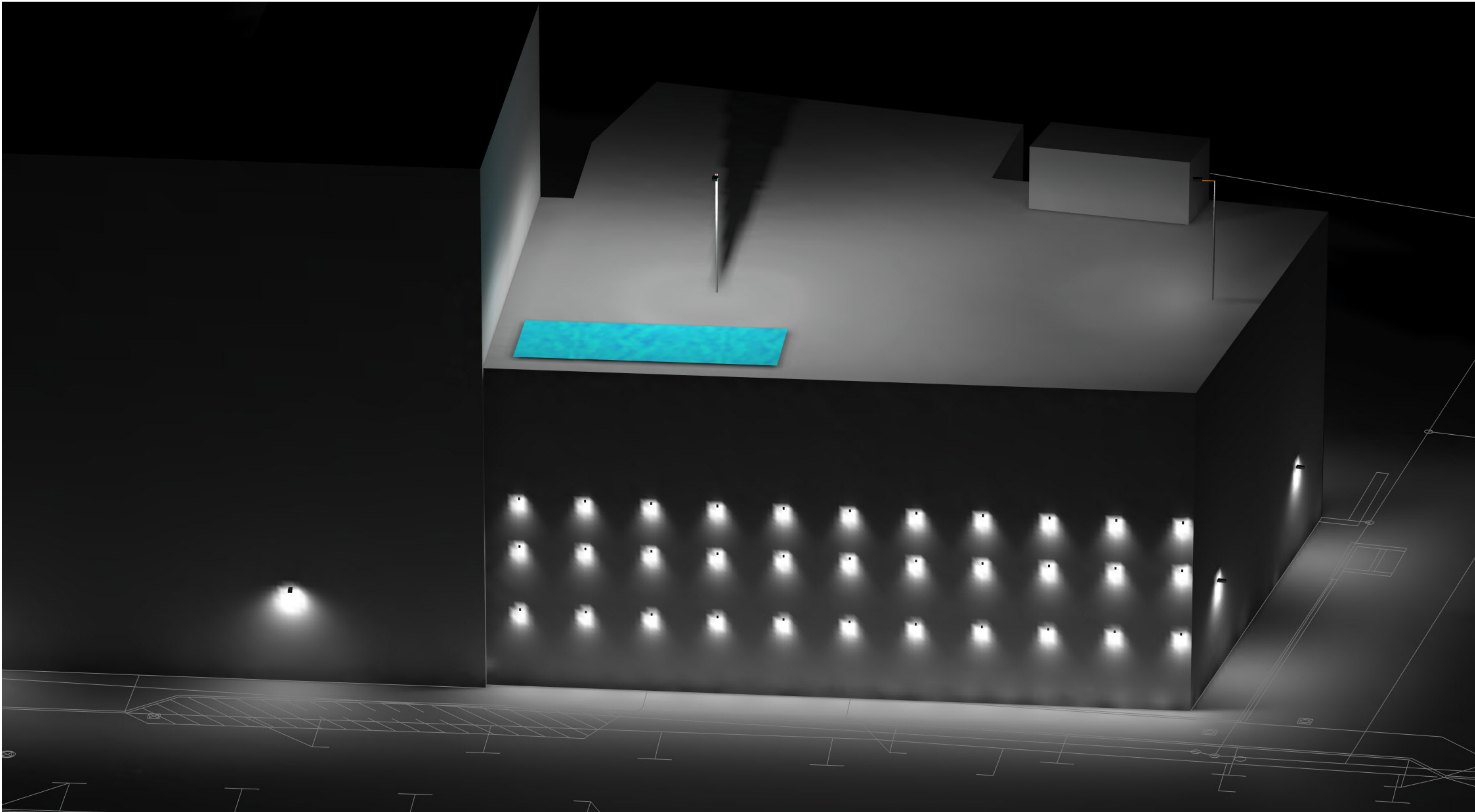
Date:2025-04-17

AGi32® Version 20.11.12

Page 7 of 12

DISCLAIMER: Calculations have been performed according to IESNA & CIE standards and goodpractice. Some differences between measured values and calculated results may occur due to tolerances in calculation methods, testing procedures, component performance, measurement techniques and field conditions such as voltage and temperature variations. Input data used to generate the attached calculations such as room dimensions, reflectances, furniture and architectural elements significantly affect the lighting calculations. If the real environment conditions do not match the input data, differences will occur between measured values and calculated values.





14750 E Nelson Ave E unit b, City of Industry, CA 91744, United States



444 Bedford Rd.Plesantville

Prepared for: Mark Sheppard

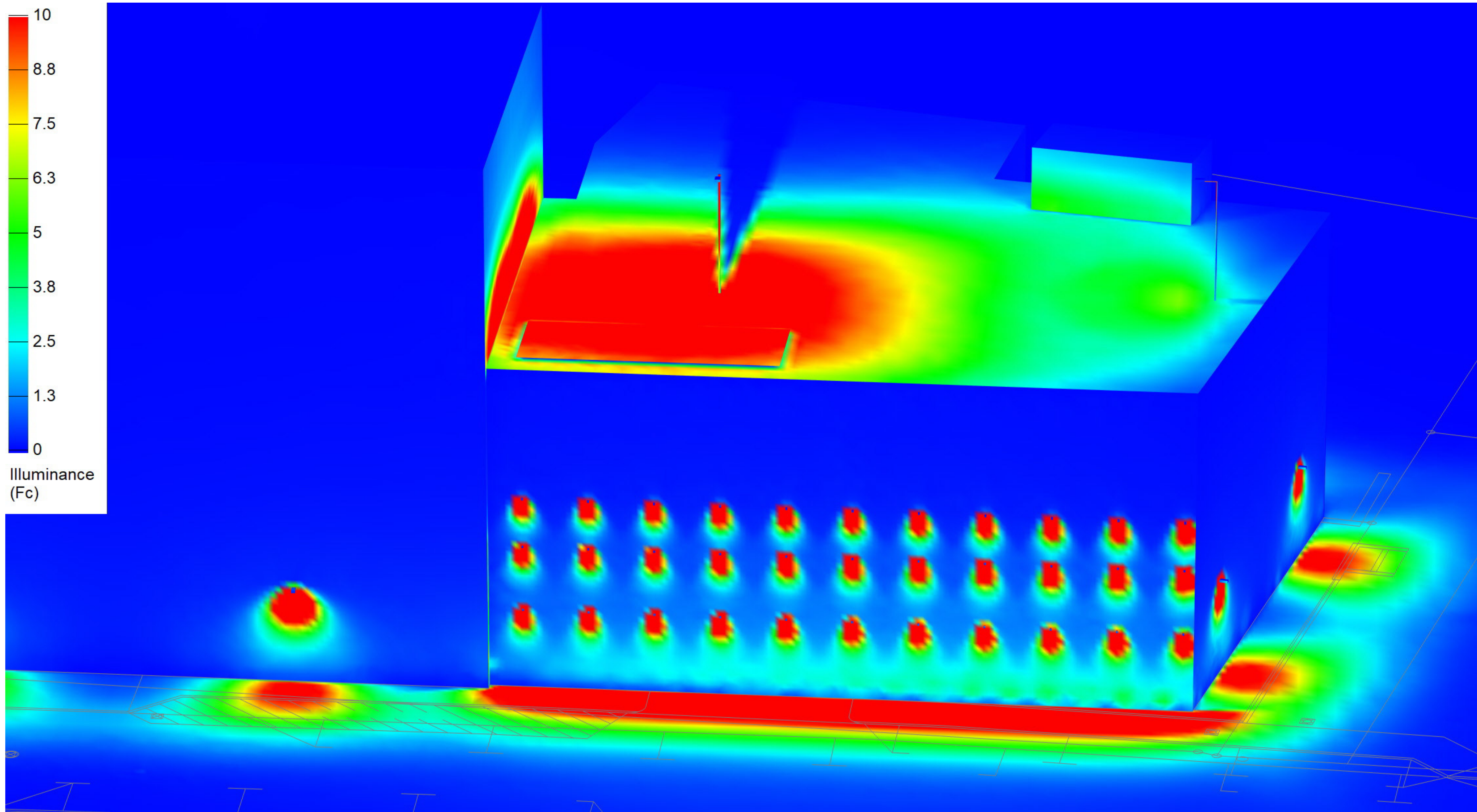
Filename: 444 Bedford Rd.Plesantville -V02.AGI

By: Damian Iwanczuk

Date:2025-04-17

AGi32® Version 20.11.12

DISCLAIMER: Calculations have been performed according to IESNA & CIE standards and goodpractice. Some differences between measured values and calculated results may occur due to tolerances in calculation methods, testing procedures, component performance, measurement techniques and field conditions such as voltage and temperature variations. Input data used to generate the attached calculations such as room dimensions, reflectances, furniture and architectural elements significantly affect the lighting calculations. If the real environment conditions do not match the input data, differences will occur between measured values and calculated values.



14750 E Nelson Ave E unit b, City of Industry, CA 91744, United States



444 Bedford Rd.Plesantville

Prepared for: Mark Sheppard

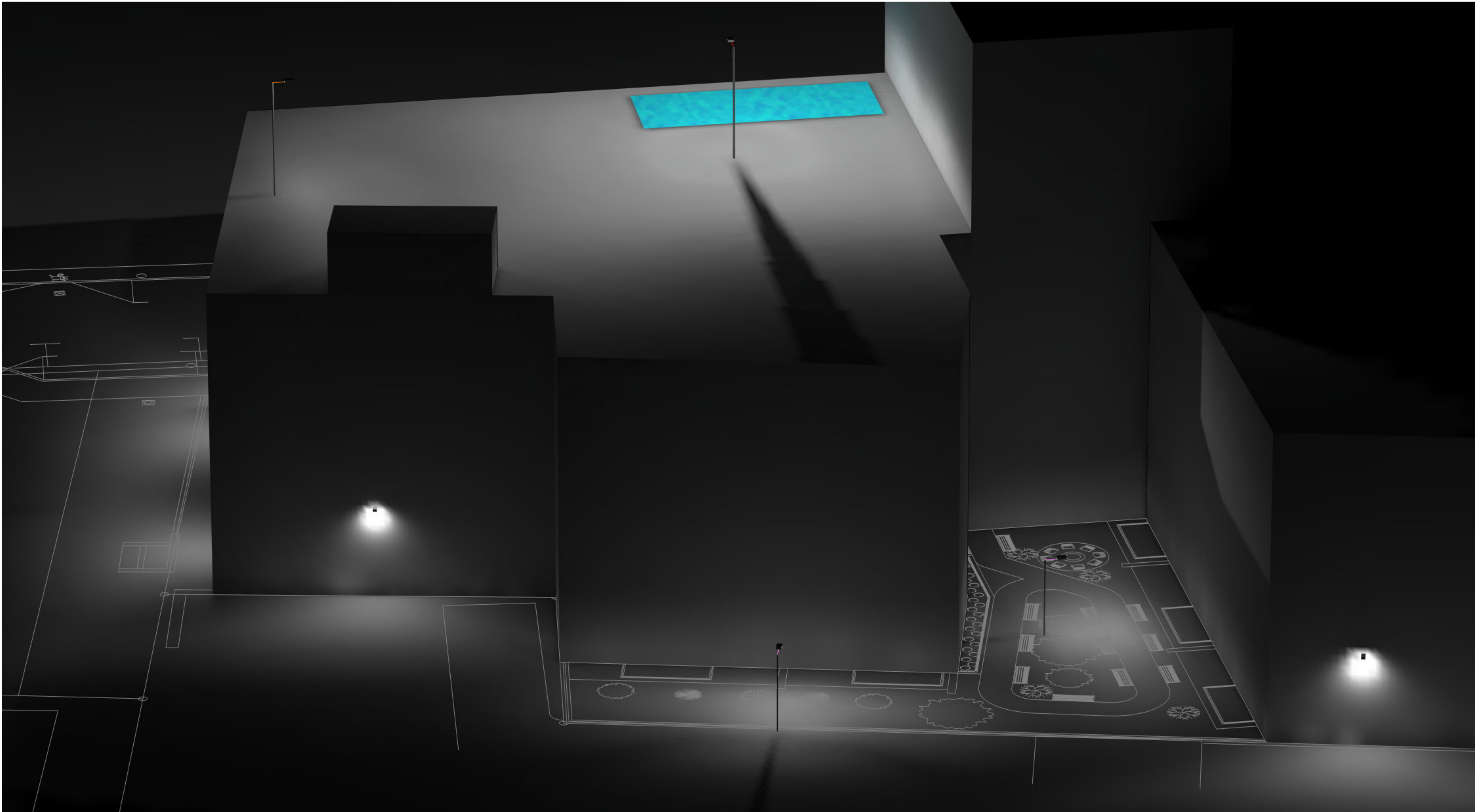
Filename: 444 Bedford Rd.Plesantville -V02.AGI

By: Damian Iwanczuk

Date:2025-04-17

AGi32® Version 20.11.12

DISCLAIMER: Calculations have been performed according to IESNA & CIE standards and goodpractice. Some differences between measured values and calculated results may occur due to tolerances in calculation methods, testing procedures, component performance, measurement techniques and field conditions such as voltage and temperature variations. Input data used to generate the attached calculations such as room dimensions, reflectances, furniture and architectural elements significantly affect the lighting calculations. If the real environment conditions do not match the input data, differences will occur between measured values and calculated values.



14750 E Nelson Ave E unit b, City of Industry, CA 91744, United States



444 Bedford Rd.Plesantville

Prepared for: Mark Sheppard

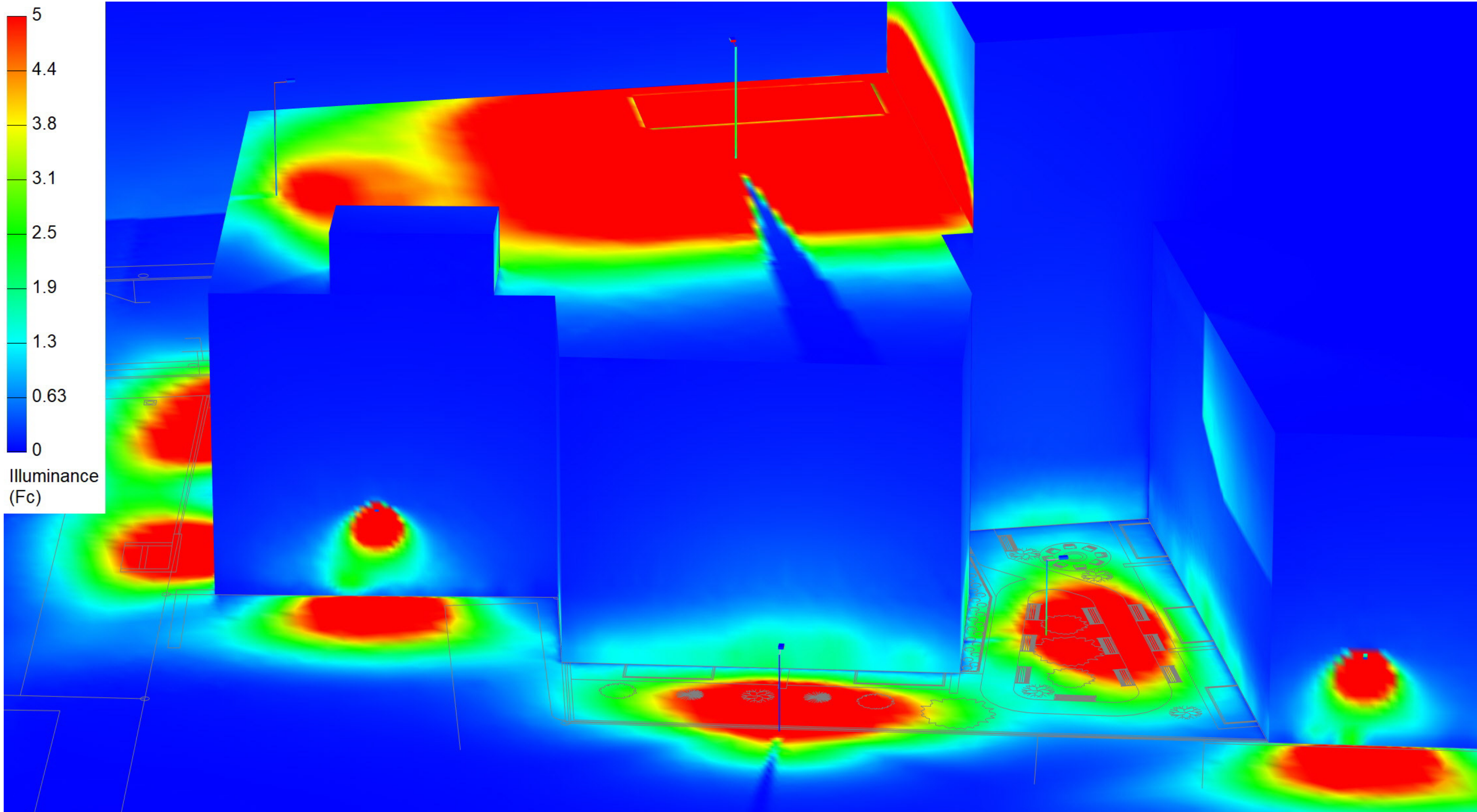
Filename: 444 Bedford Rd.Plesantville -V02.AGI

By: Damian Iwanczuk

Date:2025-04-17

AGi32® Version 20.11.12

DISCLAIMER: Calculations have been performed according to IESNA & CIE standards and goodpractice. Some differences between measured values and calculated results may occur due to tolerances in calculation methods, testing procedures, component performance, measurement techniques and field conditions such as voltage and temperature variations. Input data used to generate the attached calculations such as room dimensions, reflectances, furniture and architectural elements significantly affect the lighting calculations. If the real environment conditions do not match the input data, differences will occur between measured values and calculated values.



14750 E Nelson Ave E unit b, City of Industry, CA 91744, United States



444 Bedford Rd.Plesantville

Prepared for: Mark Sheppard

Filename: 444 Bedford Rd.Plesantville -V02.AGI

By: Damian Iwanczuk

Date:2025-04-17

AGi32® Version 20.11.12

DISCLAIMER: Calculations have been performed according to IESNA & CIE standards and goodpractice. Some differences between measured values and calculated results may occur due to tolerances in calculation methods, testing procedures, component performance, measurement techniques and field conditions such as voltage and temperature variations. Input data used to generate the attached calculations such as room dimensions, reflectances, furniture and architectural elements significantly affect the lighting calculations. If the real environment conditions do not match the input data, differences will occur between measured values and calculated values.